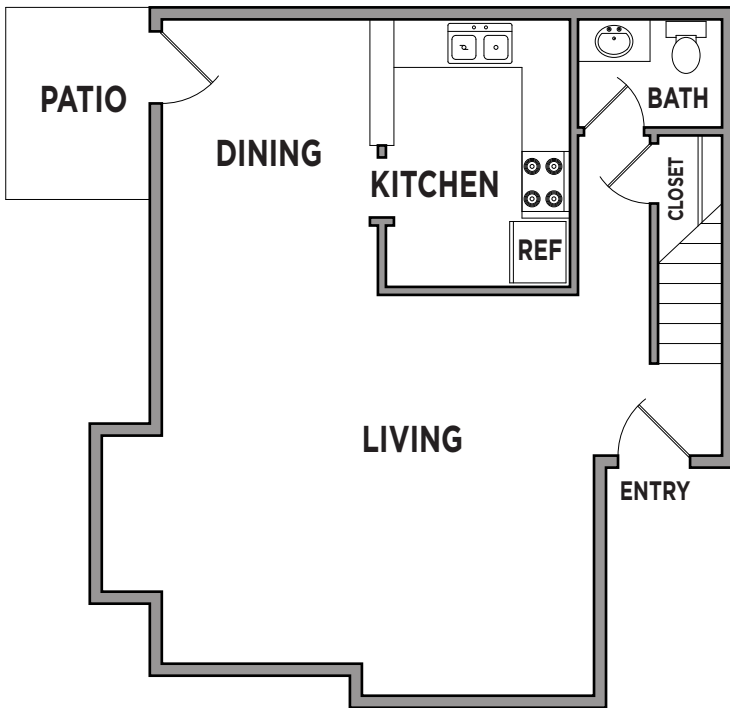


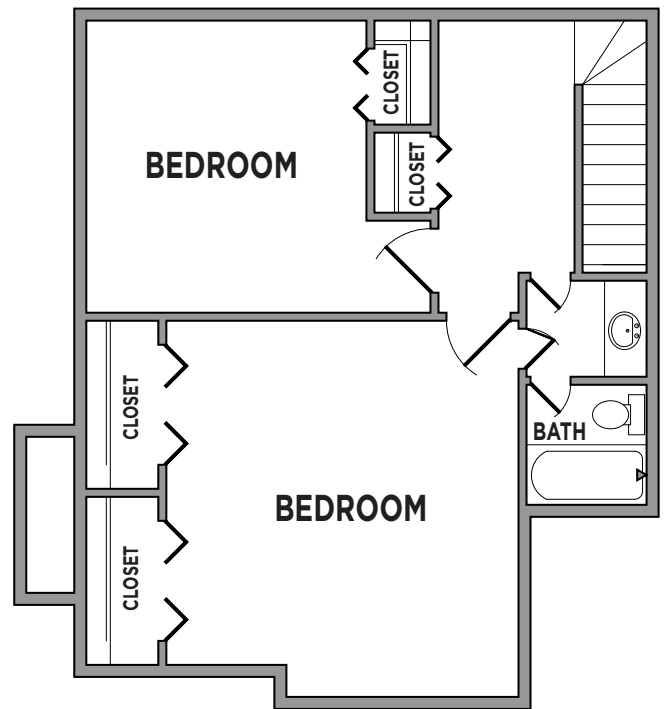
STONEHILL TERRACE

3101 W. NORTHGATE DRIVE, IRVING, TEXAS 75062 | 972.594.8253
STONEHILLTERRACE.COM | LEASING.STONEHILLTERRACE@URBANSWCAPITAL.COM

APARTMENTS



First Floor



Second Floor

PLAN B-1

2 bd / 1.5 bth

1,148 SQ. FT.*



*square footage is approximate